



# Corridor Advisory Group and Task Force Meeting #9

*March 22, 2011*



# Agenda



- Recap CAG/TF #8
- Study Process Review
- Existing Transportation System Performance Update
- 2040 Travel Model Update
- Purpose and Need
- Public Meeting #2 Overview
- Footprint/Alt. Concept Workshop
- Next Steps



# CAG/TF #8 Recap





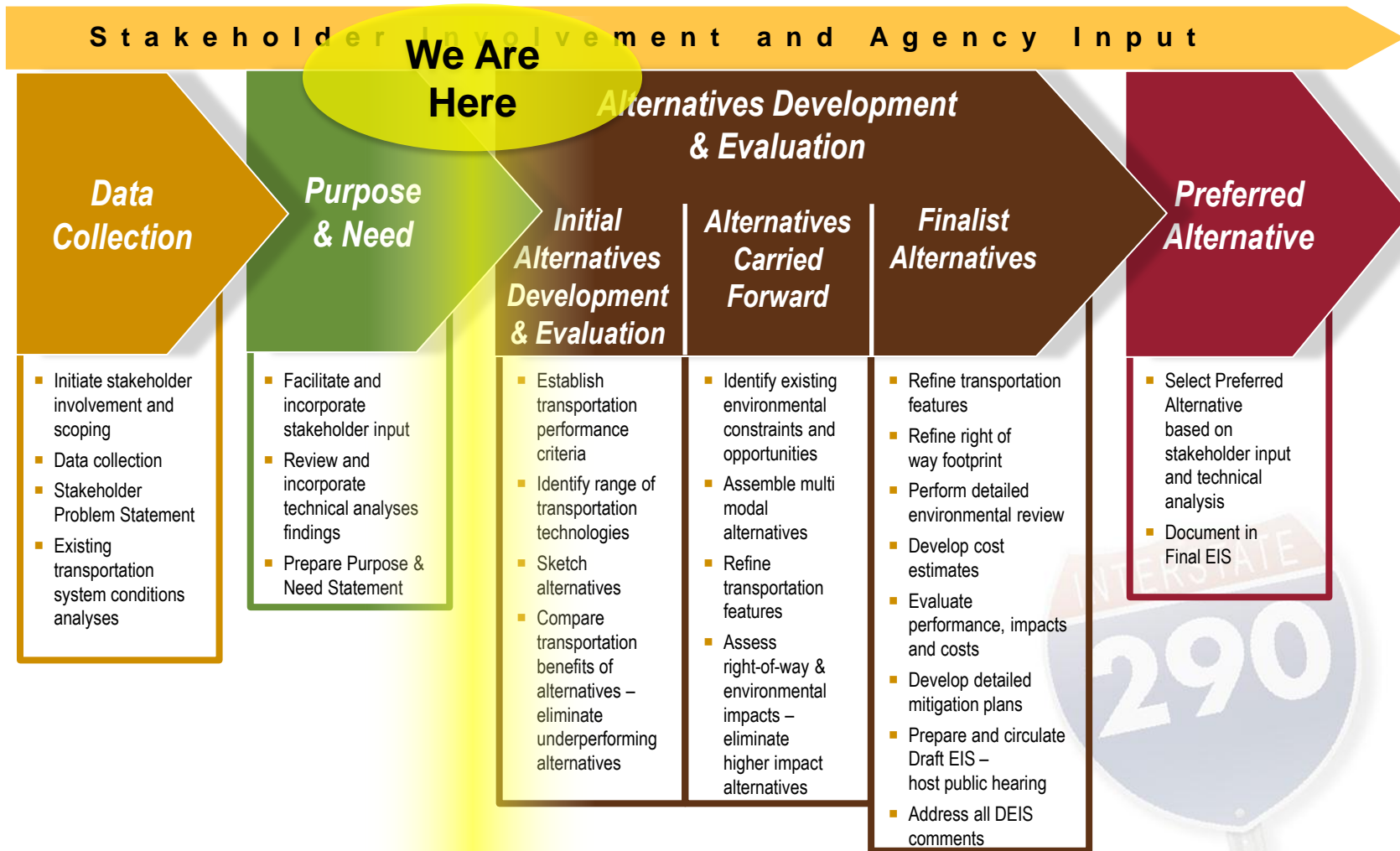
- **Initial Alternatives Summary:**
  - Summary of suggested alternatives
  - Initial list of alternatives for travel modeling
  
- **Typical Section Review of:**
  - Existing conditions
  - Suggested alternatives



# Study Process Review



# Phase I Study Process: Recap



# Screening Process Review



- Cooperative process between stakeholders and IDOT
- Transit agencies (CTA, Pace, Metra) play a key role
- Logical process to evaluate stand alone/single modes and combination of mode alternatives
- Mechanisms for modification or elimination of underperforming alternatives

## Phase I Study Alternatives Development and Evaluation Process



# Purpose & Need





- **Full Draft of Purpose & Need**
  - Based on outline presented to CAG/TF
  - Incorporation of stakeholder comments
- **Revisions**
  - Improve access to jobs as a separate need point
  - Incorporation of 2040 No Build travel model results
  - Minor edits



# *Existing Transportation System Performance Update*



# ETSP Update – Crash Report Addendum



## ■ I-290 High Crash Locations

- 1300 Police Reports Reviewed
- Less than 5% of crashes attributed to DUI, glare, distracted driving
- Probable crash factors consistent with July 2010 Crash analysis findings

## ■ Transit Crashes

- Pace Bus & CTA Bus and rail collision data provided
- 170 crashes over 2-year period – most minor – 15 ‘major’
- 3 Blue Line incidents – auto leaving expressway
- No indication of transit safety issues related to roadway design or service operations

## ■ Pedestrian & Bicycle

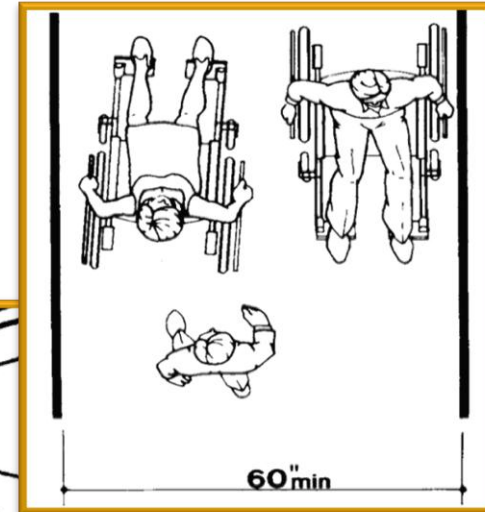
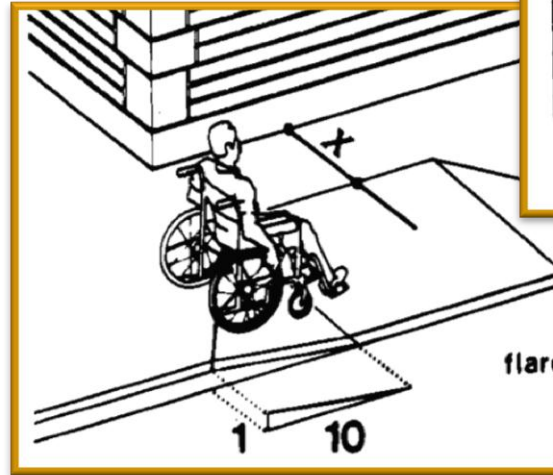
- 42 recorded ped & bike crashes with autos
- No driver DUI's, 2 cases the pedestrian was under influence
- Primary cause reported – driver failed to yield to right of way
- July 2010 crash analysis findings unchanged



# ETSP – ADA Accessible I-290 Crossings



- 21 Crossings of I-290 reviewed
- ½ of crossings not ADA compliant due to:
  - Substandard curb ramps
  - Inadequate widths
  - Steep grades



Crash Addendum & ADA Report available on-line:

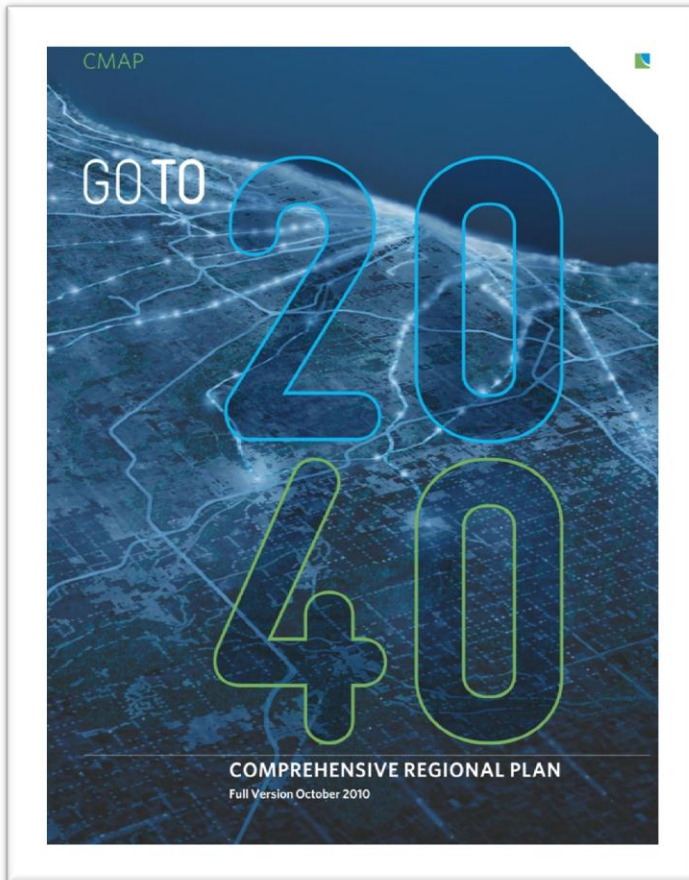
[www.eisenhowerexpressway.com](http://www.eisenhowerexpressway.com)



# 2040 Travel Model Update



# 2040 Travel Model Update



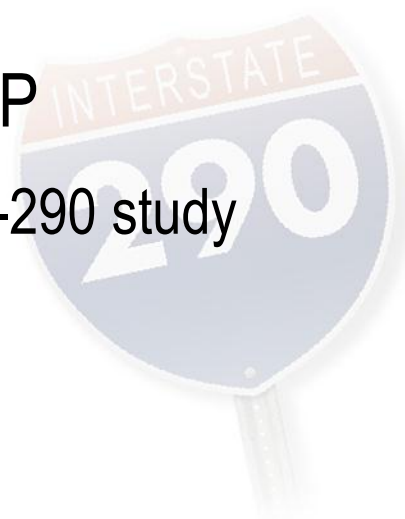
- CMAP GoTo 2040 Comprehensive Regional Plan (October 2010)
- Policy-based (vs. land use based)
  - Policies & investments assumed to strengthen existing communities
  - New development & redevelopment assumes:
    - Livable communities
    - Denser communities
    - Mixed use &
    - Transit oriented development





## I-290 Phase I Study 2040 Socio-Economic Forecast

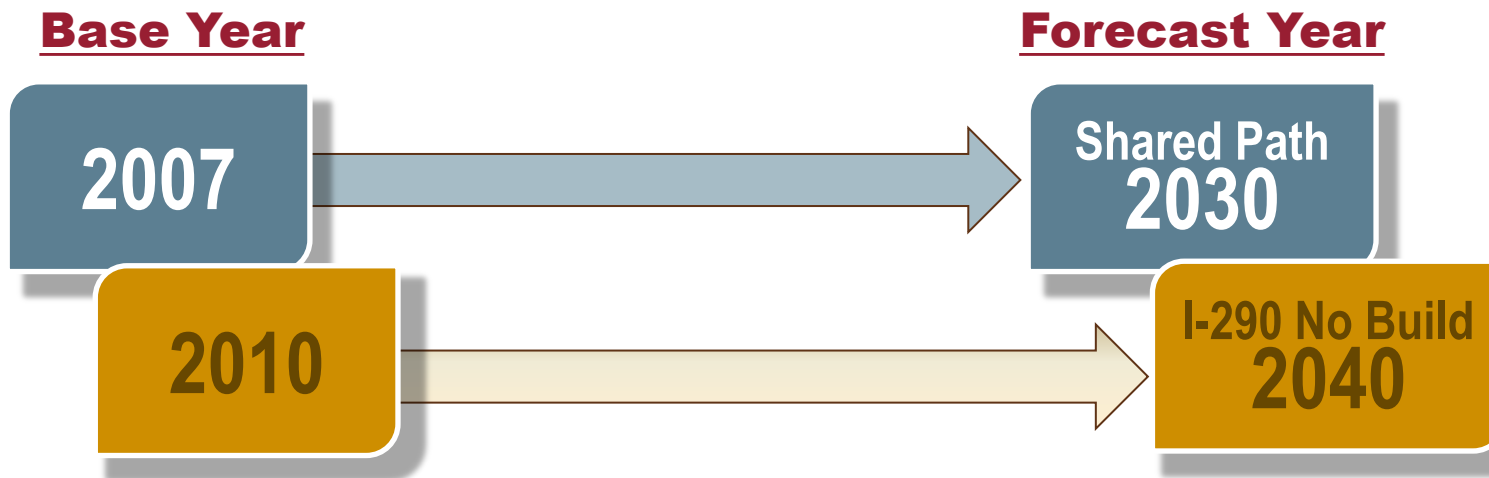
- No-Build (Baseline) scenario developed:
  - Based on financially constrained CMAP GoTo2040 Plan transportation network
  - Removed the I-290 capacity improvements from the network
- Forecast methodology coordinated with CMAP
  - Reflects trends & market constraints relative to I-290 study



# 2040 Travel Model Update



- 2040 Travel forecast *replaces* 2030 forecast



Study Area	CMAP - 2010		I-290 No Build - 2040	
	Population	Employment	Population	Employment
	<b>312,955</b>	<b>105,344</b>	<b>329,500</b>	<b>151,100</b>

\* Note that the I-290 Forecast uses the U.S. Bureau of Economic Analysis definition of employment, while the CMAP forecasts use the Illinois Department of Employment Security definition of employment



## Travel Modeling - Next Steps

- Update 2040 travel model inputs
- Run Model for 2040 No Build (Baseline) Alternative
- Test Initial single mode alternatives
- Presentation of results after May Public Meeting



# *Public Meeting #2 Overview*



# Public Open House Meeting #2 Overview



- Date:** May 18, 2011
- Time:** 4:00 p.m. to 8:00 p.m.
- Location:** Proviso Math and Science Academy  
8601 W. Roosevelt Road  
(1<sup>st</sup> Avenue & Roosevelt Rd.)  
Forest Park, Illinois

## Meeting Agenda

- Narrated slide show summarizing study status
- Open House
  - Existing transportation system conditions
  - Draft Purpose & Need
  - Single mode alternatives summary



# *Footprint/Alternatives Concepts Workshop*



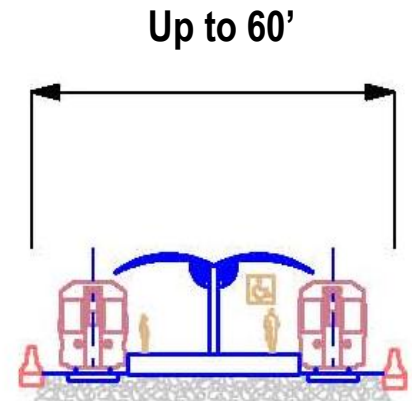
# Workshop Overview



- **Last CAG Meeting - Reviewed single mode**

- **“Typical Sections”:**

- Existing typical sections
- Proposed single mode typical sections



- **Today - Review single mode “Footprints”:**

- Represent how single mode alternatives could ‘fit’ in the study area
- Identify physical constraints & opportunities for various modes



# Workshop Overview

- **Footprints selected for this workshop:**
  - ✓ 'Physical' corridor concepts that have right of way requirements
  - ✓ Represent single mode alternatives
  - ✓ Reflect stakeholder suggested alternatives
- **Transit - Blue Line Extensions from Forest Park**
- **Highway - HOV add lane - Buffer separated**



# Workshop Overview



## Two Workshop Sections:

### *A - Footprint Exercise - DesPlaines Avenue to Cicero Avenue*

- Existing conditions maps without alternatives.
- Alternative 'Footprint' templates used to
  - compare relative space requirements
  - evaluate potential locations
- Provide feedback related to constraints & opportunities

### *B - Footprint Review - West of DesPlaines Avenue*

- Review concept footprints provided
- Provide feedback regarding constraints & opportunities



# Next Steps



# Next Steps



- Single mode evaluation results
- Identify combination alternatives
- Evaluate combination alternatives

## Public Meeting #2

**May 18, 2011**

Proviso Math & Science  
Academy  
8601 W. Roosevelt Rd.  
Forest Park, IL

## Corridor Advisory Group and Task Force Meeting #10

**July 2011**

Location TBD



